

**FEBRUARY
2025**

**NOW HIRING
FT & PT**

Dietary
Activities
CNA
RN
LPN

Learn More & Apply
Online at
arbutusparkmanor.com/careers

EST. 1973
Faith
Care
Compassion



Arbutus Park
Retirement Community
207 Ottawa Street
Johnstown, PA 15904

arbutusparkmanor.com

(814) 266-8621



Arbutus Park RETIREMENT COMMUNITY

Pathways

Monthly Campus Newsletter
Celebrating 51 Years!

Congratulations Lois!

We would like to thank and congratulate Lois Pudliner, our Director of Personal Care, on her retirement after 50 years with our organization! Starting in the Dietary department when the building was new, Lois worked her way up to being certified to lead the Personal Care floor of our facility. Countless residents and staff have been positively impacted by your leadership—thank you and enjoy your retirement!



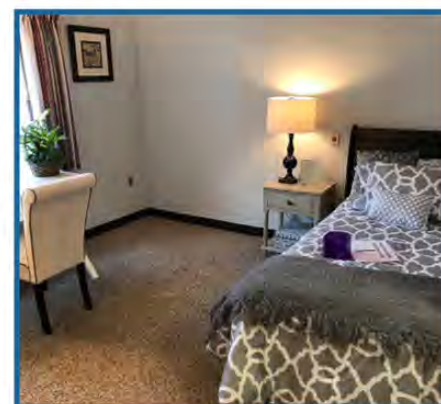
Tomahawks Game

Celebrate Valentine's Day (Feb 14) with free tickets to 'Arbutus Park Night' at the Johnstown Tomahawks! Members of the Cottage Community should RSVP to Kelsey and staff members should sign up at the Business Office by February 7. Puck drops at 7:30pm. If we can get at least 10 interested, we will run the bus from the Manor sunporch at 7:00pm. GO HAWKS!



Personal Care Availability

We currently have availability in our Personal Care. PC is a wonderful option for those who seek to continue an active lifestyle who also want the security of knowing that 24-hour care is nearby whenever assistance is needed. Each private room features a private bath, call bell and safety features, cable tv, and internet. Enjoy great meals, activities, quality care, and fellowship - respite care also available!



Independent Living Cottages

We currently have three openings being presented to our waitlists! After renovation is complete, we contact our waitlists for touring before advertising them online. If a cottager makes a referral, they receive one month maintenance FREE upon the move-in. Call Kelsey at 814.262.2150 for more information.



Celebrations

FEBRUARY BIRTHDAYS

- 1 Shirley Wertz
- 4 John Moll
- 6 Harold Kaseler
- 7 Albert Tomkosky
- 8 Stephen Hunt
- 8 John Patterson
- 8 Kim Sell
- 9 Florence Grove
- 14 Pamela Britt
- 11 Helen Wilson
- 15 Jerry Varner
- 22 Virgil Szala
- 23 Ted Custer
- 23 Daniel Luciew
- 23 Margie Roseman
- 27 Kathy Bulvin
- 29 Patricia Adams



EMPLOYEE WORK ANNIVERSARIES

- Kerry Petry - Business Office - 37 Years
- Gary Capouellez - Dietary - 30 Years
- Natalie Rovansek - Nursing - 30 Years
- Veronica Clites - Nursing - 25 Years
- Carolyn Willoughby - Activities - 12 Years
- Pam Estes - Activities - 5 Years
- Cleo Carr - Security - 3 Years
- Sierra Harper - Nursing - 3 Years
- Justina Mrsnik - Dietary - 3 Years
- Sue Thompson - Business Office - 3 Years
- Amy Foltz - Personal Care - 2 Years
- Benson Kiringa - Nursing - 2 Years
- Shaquayla McFarlin - Nursing - 1 Year
- James McNally - Maintenance - 1 Year
- Kim Rambish - Activities - 1 Year

*Thank you for your hard work and dedication!
We appreciate you being part of our team!*

COTTAGE ANNIVERSARIES

- Feb 14: Maurice & Nancy Rhine
- Feb 20: Frank & Linda Burkhard

 **Arbutus Park**
RETIREMENT COMMUNITY

ANNUAL FAMILY PICNIC

Wednesday, July 16

11am-2pm

Advantage Therapy Star of the Month

The star of the month for February is Leonard Nadonley! "Lenny" fell at home and sustained a closed, sacral fracture, as well as, recovered from multiple medical complexities. At first he had difficulty with the task of getting to sit at the side of the back, while having the support of a back brace.

With therapy interventions and increased encouragement and motivation from his caregivers and his family, he found his drive, pushing himself to achieve independence with his mobility with a front wheeled walker. He had progressed from requiring a mechanical lift to get out of bed to full independence.

He has now been released from a life vest as well, being cleared medically and achieving all of his goals, specifically to return home. He has worked so hard to reach his goals. Congratulations Lenny! We are all so happy for you!



February Trivia:

Length: February is the shortest month of the year, with 28 days unless it's a leap year.

Name: The name February comes from the Roman festival Februa, which was a time of purification and sacrifice.

Birthstone: The birthstone for February is amethyst, which symbolizes love, humility, sincerity, and spiritual wisdom.

Birth flowers: The birth flowers for February are the violet, the common primrose, and the iris.

Zodiac signs: The zodiac signs for February are Aquarius (until February 18) and Pisces (February 19 onward).

Historical events: February 1, 1865 is when President Abraham Lincoln signed the 13th Amendment, which abolished slavery.

Holidays: February is known for Groundhog Day, Valentine's Day, and President's Day.

Welsh name: The Welsh call February "y mis bach" which means "little month".

Latin name: February comes from the Latin word februa, which means "to cleanse."

Weather: February is the United States snowiest month, according to data from the National Weather Service.

Leap Year: Julius Caesar introduced a new calendar system, the Julian calendar, where he added a day to the end of February every four years on February 29th. This is Leap Day.

Event Rentals

We are excited to make our large Community Room available for event rentals! Ideal for birthdays parties, retirement parties, baby showers, bridal showers, and more!

The Community Room features a large gathering space, access to 5-ft round and 8-ft long tables, plenty of seating, parking lot access, small kitchenette, and two ADA restrooms.

Round Tables: 19 available, which seat 4-6 people
Long Tables: 19 available, which seat 6-8 people
Chairs Available: Approximately 125 available



Weekdays Rates: \$75 by the hour. Includes table and chair room setup.
Weekends Rates: \$200 for the day, which includes a non-refundable \$50 security deposit.
Includes table and chair room setup.

Download a copy of the Rental agreement, view availability, and read Frequently Asked Questions at: <https://arbutusparkmanor.com/eventrentals>

Facility does not permit alcohol, smoking, pets, or open flames.
Limited catering options available by request.
Decorating is limited to the blue partition wall. Tape and pushpins should not be used on walls or windows.



Walk In Wednesdays!

Learn About Employment Opportunities and Interview!

February 5, 12, 19, 26 1:00-4:00pm
207 Ottawa St - Johnstown, PA 15904

Cottage News & Notes

Cottage Dinner

The next Cottage Dinner will be on **Monday, February 3** at 5pm in the Manor Community Room. February Menu: *Stuffed Pork Chops, Rice Florentine, Creamed Peas, Tossed Salad, Cherry Pie*. Alternate Diet meals are available *by advance special request*. (\$20) *RSVP are due January 27*. Delivery is currently available, with meals being delivered between 5:20-5:30pm.

March Menu: Shepherds Pie, Green Beans, Pepperslaw, Mint Chocolate Cake. RSVP due February 24. The \$12 dinner/brunch charge will be added to your monthly statement. We require a 24 hour notice to Community Affairs on cancellations. No-shows will be billed for the meal.

Cottage Brunch

The February brunch is Wednesday, February 19. RSVP is due February 12. The bus is available for transportation, and half of the community room parking lot will be designated. (*Including the named spots!*) Doors will open at 9:45 am. Announcements and prayer start at 10 am in the Manor Community Room. Tables are numbered and omelette order forms will be at your seat and collected by our staff.

2025 Dates

Cottage Dinners: March 3, April 7, May 5, June 2, August 4, September 8, October 6, November 3, December 1.

Cottage Brunch: March 19, April 16, May 21, June 18, August 20, September 17, October 15.

Super Bowl Party!

Join us for a Super Bowl party on Sunday, February 9. Kick-off is 6:30pm, gathering begins at 6:00pm. We will provide beverages and chips, feel free to bring a snack to share!

Did You Know?

The Community Center on Nadona has a large dvd collection to borrow on these cold winter days! Or stop by and play a few rounds of Wii bowling!



Who America is rooting for in the Super Bowl



- KANSAS CITY CHIEFS
- PHILADELPHIA EAGLES
- METEOR STRIKE

PENNSYLVANIA PROPERTY TAX or RENT REBATE PROGRAM 2024



PA-1000 Booklet 05-24



Pennsylvania
Department of Revenue

BUREAU OF INDIVIDUAL TAXES
HARRISBURG PA 17128-0503
revenue.pa.gov

APPLICATION INSIDE

	INCOME	MAX. REBATE
HOMEOWNERS AND RENTERS	\$ 0 to \$ 8,270	\$1,000
 	\$ 8,271 to \$ 15,510	\$ 770
	\$15,511 to \$ 18,610	\$ 460
	\$18,611 to \$ 46,520	\$ 380

FILE YOUR APPLICATION ONLINE



Property Tax/Rent Rebate Program applications can now be submitted online via the Department of Revenue's myPATH portal at myPATH.pa.gov.

NOTE

Applicants can exclude one-half of all Social Security income.

IMPORTANT DATES

Application deadline: **JUNE 30, 2025**

Rebates begin: **EARLY JULY, 2025**

Independent Living Cottages

Rick Wilson, in collaboration with Kelsey, has kindly agreed to facilitate rent rebate applications one more year! If you meet the income tiers listed above, please reach out to Kelsey at the Nadona Community Center and schedule a time for Rick to visit with you and assist in the application process. We would ask that all appointments are completed in February. Thank you!



From Pastor Jon

Changing Landscapes... PART 1



So much news this week (the week I am writing this article) on the fires in LA. The before and after pictures shown are drastically different and do not go unnoticed. We hurt for those who lost so much and pray for the safety of all as the first responders continue to battle the fires. This month's article is an attempt to bring a positive Christian perspective to the reality of change we all face. As the landscape in LA county and western NC (among other places in our history) have faced natural disasters, the landscape has changed and will never be the same. Lives have been uprooted, and uncertainty is now a common thought. Is there a positive lesson to be found as we consider the devastation of life's storms? I think there is... Read on and see if you agree. Let me know.

Life is a journey marked by seasons, transitions, and the ever-changing landscapes of our spiritual and earthly existence. For the Christian, these changes are not random occurrences, but opportunities woven into God's sovereign plan. They challenge us to trust, grow, and align ourselves with God's purposes.

The Bible is filled with stories of changing landscapes—literal and figurative—that shape the lives of God's people. Abraham's journey to an unknown land, Israel's exodus through the wilderness, and Paul's missionary travels all demonstrate how God uses transitions to fulfill His purposes. These moments of change remind Christians that life is not static; it is a pilgrimage toward God's eternal promises.

Consider the words of Ecclesiastes 3:1: *"There is a time for everything, and a season for every activity under the heavens."* This verse acknowledges the inevitability of change and invites believers to embrace it with faith, trusting that God's timing is perfect.

Changing landscapes, whether physical, emotional, or spiritual, serve a divine purpose in the life of a Christian. They are tools God uses to refine, redirect, and reveal His will. Let me share a few bible nuggets of truth concerning the changes we all deal with in life.

God uses change to refine us. Changes produce perseverance and maturity. These changing landscapes challenge us to surrender our plans and trust in God's wisdom, allowing Him to shape our character. Just as gold is purified through fire, Christians are often refined through life's transitions. Trials, uncertainties, and shifts in circumstances reveal our dependence on God. James 1:2-4 reminds us to "consider it pure joy" when we face trials.

God uses change to redirect us. God often uses changes to redirect our paths toward His purposes. Proverbs 16:9 states, "In their hearts humans plan their course, but the Lord establishes their steps." A shift in landscape—whether it be a new job, a move, or a significant loss—can feel disorienting. Yet, in hindsight, Christians often see how these changes align with God's greater plan for their lives and His kingdom.

God uses change to reveal to us His faithfulness. Changing landscapes provide opportunities for God to reveal His faithfulness. When the Israelites wandered in the wilderness, God provided manna, water, and guidance through a cloud by day and fire by night. In our own lives, seasons of transition are times when we experience God's provision, presence, and power most tangibly.

As we face changes, let's not forget God made the most needed change in us when He saved us. *"Therefore, if anyone is in Christ, he is a new creation; old things have passed away; behold, all things have become new."*

If you want to talk about this spiritual change, let me know. I am not yet perfected, but I have been eternally changed.



Arbutus Park
RETIREMENT COMMUNITY

PRESENTS

The "Hot Sa" Newywed Game



Arbutus Park couples
register to play on or before
February 5, 2025
Call 814-262-2150

BASKET PARTY!

**SATURDAY
APRIL 12
10am-2pm**

Tickets \$5 per 25 Ticket Sheet

50/50 \$1 each or 7 for \$5

Premium Baskets \$5 for 3 tickets

Marianna's Sub & Pizza (\$10) Sale - While Supplies Last!

Winners Announced Via Facebook Live at 2:15pm